



**ADDITIONAL AGENDA ITEM**

This is a supplement to the original agenda and includes an appendix to a report that is additional to the original agenda.

**NOTTINGHAM CITY COUNCIL**

**HEALTH AND WELLBEING BOARD COMMISSIONING SUB COMMITTEE**

**Date:** Tuesday, 14 July 2015

**Time:** 3.00 pm

**Place:** LH 2.32 - Loxley House, Station Street, Nottingham, NG2 3NG

**Governance Officer:** Phil Wye **Direct Dial:** 0115 8764637

**AGENDA**

**Pages**

- |          |  |               |
|----------|--|---------------|
| <b>4</b> | <b>BETTER CARE FUND PERFORMANCE REPORT – APPENDIX A</b><br>Report of the Director of Primary Care Development and Service<br>Integration and the Director of Quality and Commissioning | <b>3 - 18</b> |
|----------|--|---------------|

This page is intentionally left blank

# Better Care Fund Indicator Report

June 2015

V3.3



**NHS**  
*Nottingham City  
Clinical Commissioning Group*

---

## Data Sources

Activity is monitored using a number of data tools and sources:

List all Sources Here:

Residential Admissions – Local Authority Reporting Systems

Reablement Metrics – Local Authority Reporting Systems

Delayed Transfers of Care – NHS England monthly DTOC Reports

Non Elective Admissions to Hospital

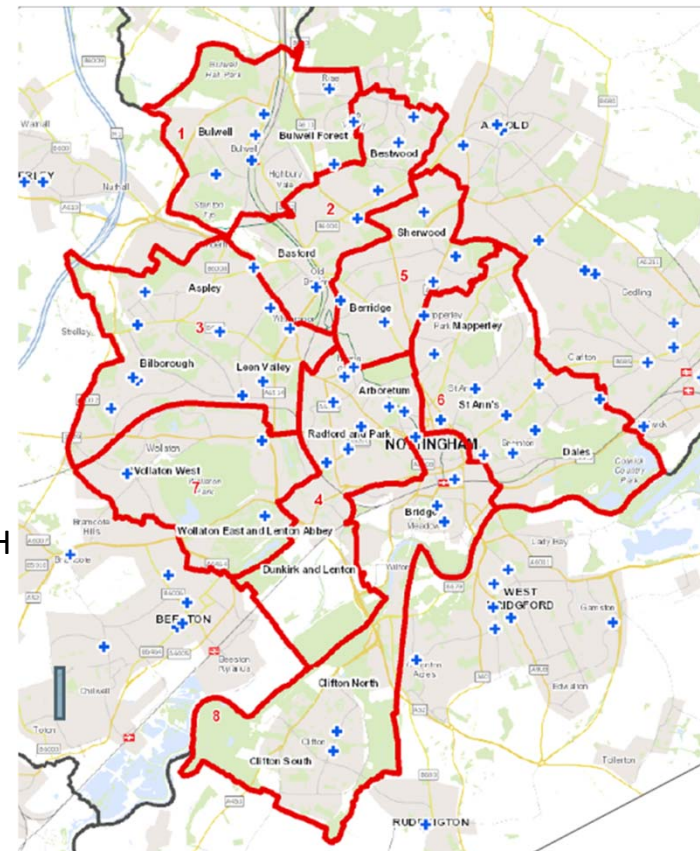
- Monthly Activity Recording (MAR) published by HSCIC
- Secondary User Service (SUS) held in local data warehouse
- Fast Track Reporting - early reporting feed received from NUH

Assistive Technology – TBC

Patient/Service User Improvement Metric

- Patient Surveys

### Care Delivery Groups



# Dashboard

NHS Nottingham City CCG

Meets target	Within 0.1% - 5% of target	>5% from target



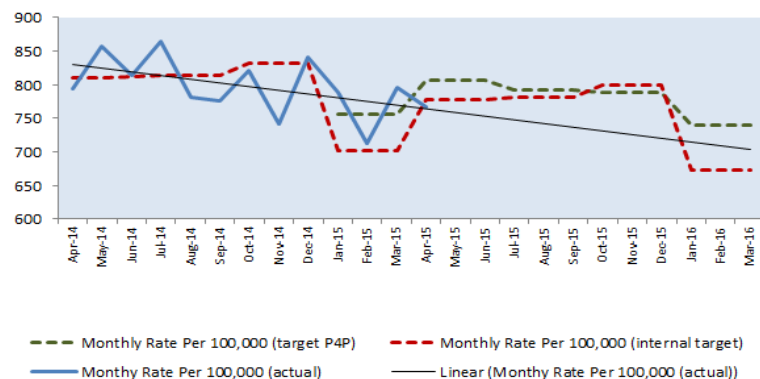
## Better Care Fund Metrics Dashboard

Version at 22-Jun-15

	Indicator	2015/16 Target	2015/16 Year to Date Target	2015/16 year to Date Actual	Year to date Performance	Month of Activity	Month Target	Month Actual	Month Performance	What trend is best	Month on Month trend
Summary	1 Residential Admissions	221	37	27	-10	May-15	18	11	-7	Lower	
	2 Reablement - still at home 91 days after discharge	66.7%	66.7%	63.0%	-3.7%	May-15	66.7%	63%	-3.7%	Higher	
	3 Delayed Transfers of Care	9,314	805	662	-143	Apr-15	805	662	-143	Lower	
	4a Non Elective Admissions to Hospital (G&A) - Payment for Performance	29,465	2,531	2,406	-125	Apr-15	2,531	2,406	-125	Lower	
	4b Non Elective Admissions to Hospital (G&A) - local target	28,562	2,442	2,406	-36	Apr-15	2,442	2,406	-36	Lower	
	5 Proportion of Population Supported by Assistive Technology	6,000	6,000	4,809	-1191						Higher
6 Improvement in Citizen Health & Social Care Outcomes	83%	83%	83%	0	Apr-15	83%	83%	0		Higher	

## Non Elective Admissions

Rate of Non Elective Admissions (General & Acute)



Source: MAR – with local adjustment

Chart 1

Non Elective Admissions (General & Acute) P4P performance

Payment for Performance Fund	Quarterly Performance	Indicative Monthly Performance		
	Q1 2015-16	Apr-15	May-15	Jun-15
Q1 15/16 Target	7593	2503	2587	2503
Q1 15/16 Actual Performance	2406	2406	0	0
Variance against target	-5187	-97	-2587	-2503
Admissions reduced absolute	-5310	-138	-2629	-2544
Payment achieved	£60,643	£60,643	£0	£0
% Payment Achieved	33%	100%	0%	0%
Payment available during Quarter	£183,949	£60,643	£62,664	£60,643
Payment not available	£123,306	£0	£62,664	£60,643

Source: MAR—with local adjustment, admissions per 100,000 pop

Table 1

Non Elective Admissions (General & Acute) local target performance

Month	Target (local)	Actual	Variation	Var at Quarter
Apr-14	810	793	-17	
May-14	810	857	47	
Jun-14	811	813	2	31
Jul-14	813	865	51	
Aug-14	813	782	-32	
Sep-14	813	777	-37	-17
Oct-14	832	822	-10	
Nov-14	832	742	-90	
Dec-14	832	841	9	-91
Jan-15	701	789	88	
Feb-15	701	713	12	
Mar-15	701	796	95	195
Apr-15	778	767	-12	
<b>Total to Apr 15</b>	<b>10,248</b>	<b>10,356</b>	<b>107</b>	

Source: MAR—with local adjustment, admissions per 100,000 pop

Table 2

### Commentary

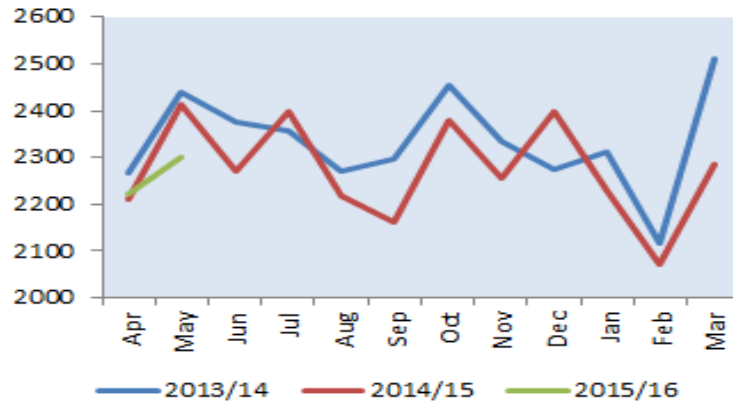
**Chart 1** - admissions against target based on MAR with adjustment for other CCGs activity counted within the Nottingham City target. This chart includes both the revised target and the internal target. The general trend in admissions is downwards and April performance was below target.

**Table 1** shows April payment for performance and an indicative monthly breakdown based on the adjusted MAR figures.

**Table 2** shows figures for monthly performance against the internal target based on admissions per 100,000 population.

## Non Elective Admissions

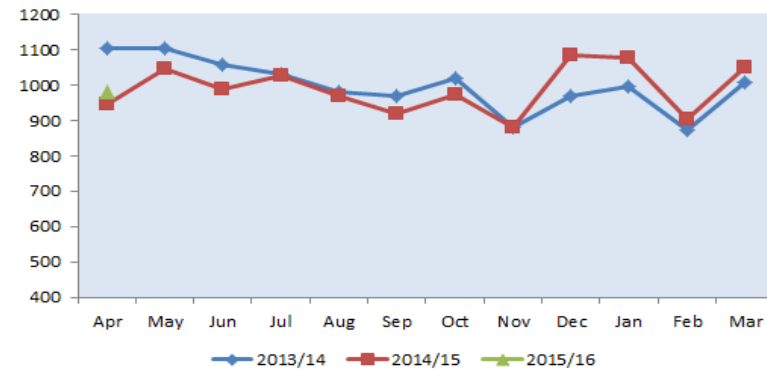
Non Elective Admissions (General & Acute) NUH only



Source: Fast Track

Chart 1

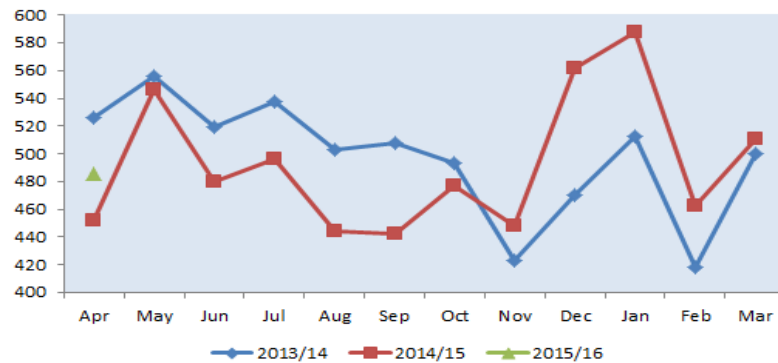
Non Elective Admissions for patients 65 years and older (General & Acute)



Source: SUS

Chart 2

Non Elective Admissions for patients aged 80 years and older (General & Acute)



Source: SUS

Chart 3

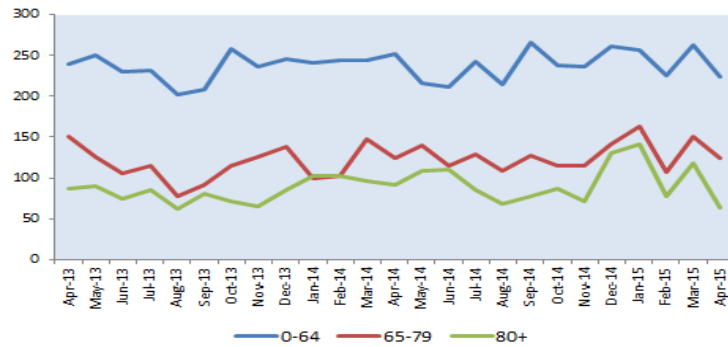
### Commentary

**Chart 1** – Non elective admissions at NUH in 14/15 have generally been below the levels seen in 13/14 with December being the main exception. May 2015 was lower than in the 2014 and 2013.

**Chart 2** – Nov 14 to Feb 15 have seen an increase in the number of admissions for those aged 65 years and older in comparison to the previous year, this would seem to be driven by those patients aged 80 years and older that can be seen in Chart 3.

## Non Elective Admissions

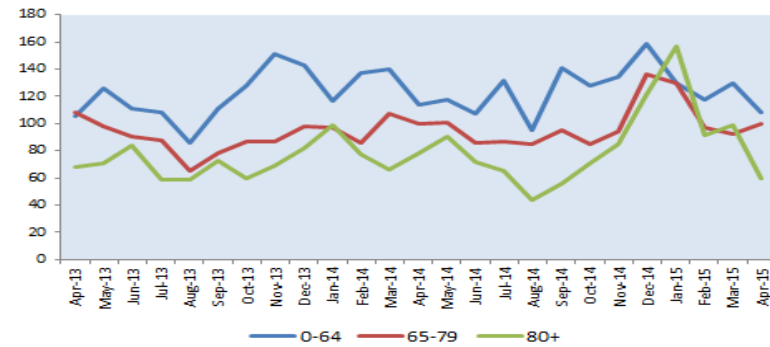
Non Elective Admissions (General & Acute) with LTC (ASC) at NUH



Source: SUS

Chart 1

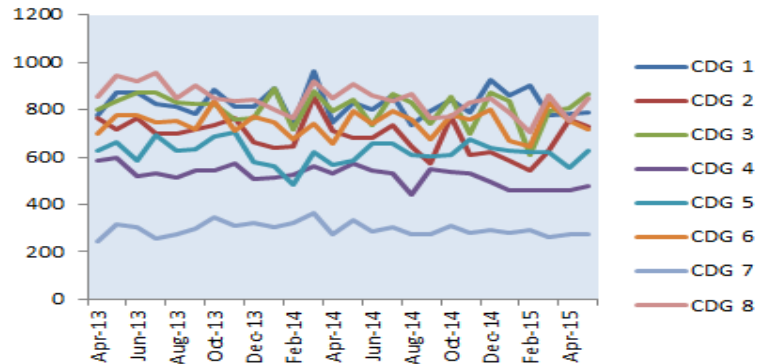
Non Elective Admissions (General & Acute) Respiratory Diagnosis at NUH



Source: SUS

Chart 2

Non Elective Admissions (General & Acute) by CDG (NUH Only) (rate per 100,000 CDG raw list size)



Source: Fast Track

Chart 3

### Commentary

**Chart 1** Non Elective Admissions to NUH with LTC based on Ambulatory Care Sensitive (ACS) definitions. April 2015 has seen a fall in all 3 age groups from the previous month.

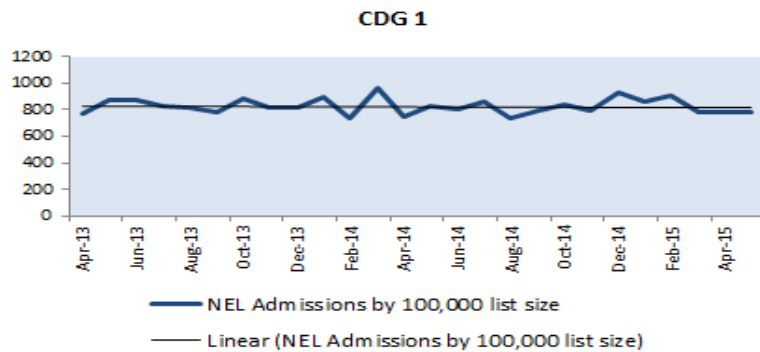
**Chart 2** Non Elective Admissions to NUH with a Respiratory primary diagnosis – December and January saw the winter peak in the cohorts most likely to be influenced by the colder temperatures, April 2015 saw the numbers in the 80+ age group fall back to normal levels.

**Chart 3** Non Elective Admissions by CDG as a proportion of constituent CDG Practice List sizes per 100,000.



## Non Elective Admissions

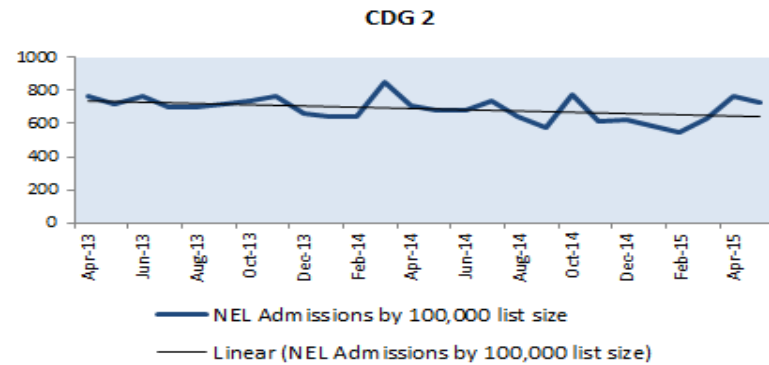
Non Elective Admissions (General & Acute) by CDG (NUH Only) (rate per 100,000 CDG raw list size)



Source: Fast Track

Chart 1

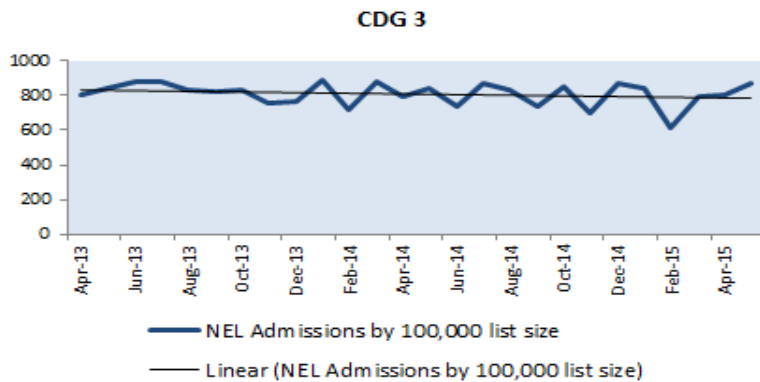
Non Elective Admissions (General & Acute) by CDG (NUH Only) (rate per 100,000 CDG raw list size)



Source: Fast Track

Chart 2

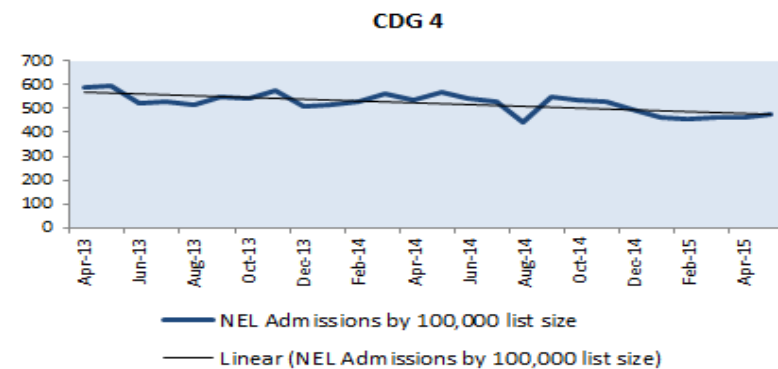
Non Elective Admissions (General & Acute) by CDG (NUH Only) (rate per 100,000 CDG raw list size)



Source: Fast Track

Chart 3

Non Elective Admissions (General & Acute) by CDG (NUH Only) (rate per 100,000 CDG raw list size)

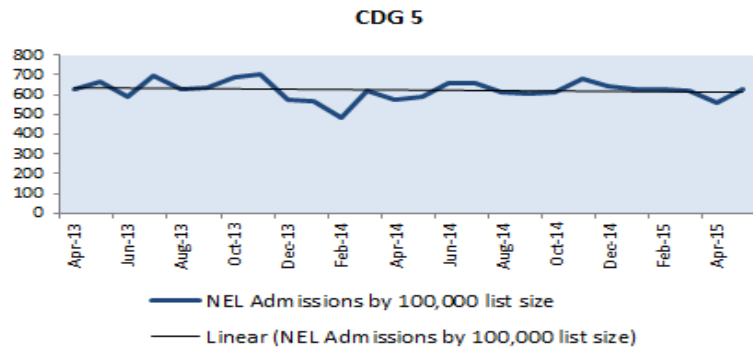


Source: Fast Track

Chart 4

## Non Elective Admissions

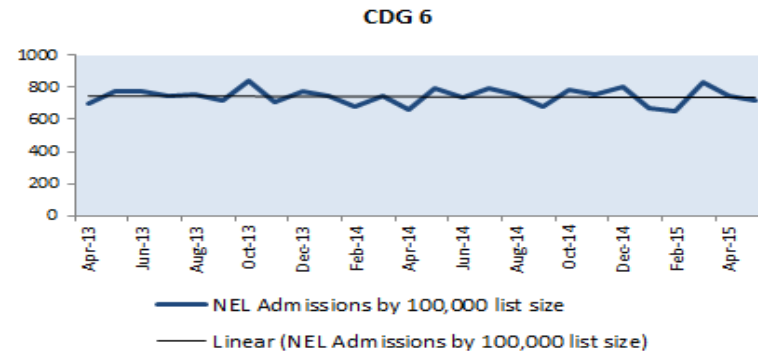
Non Elective Admissions (General & Acute) by CDG (NUH Only) (rate per 100,000 CDG raw list size)



Source: Fast Track

Chart 1

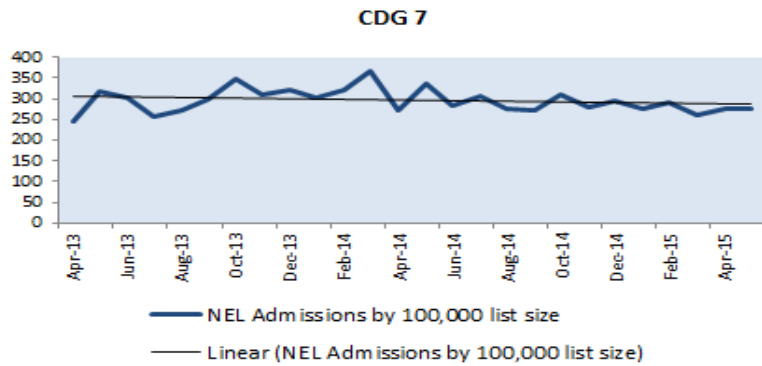
Non Elective Admissions (General & Acute) by CDG (NUH Only) (rate per 100,000 CDG raw list size)



Source: Fast Track

Chart 2

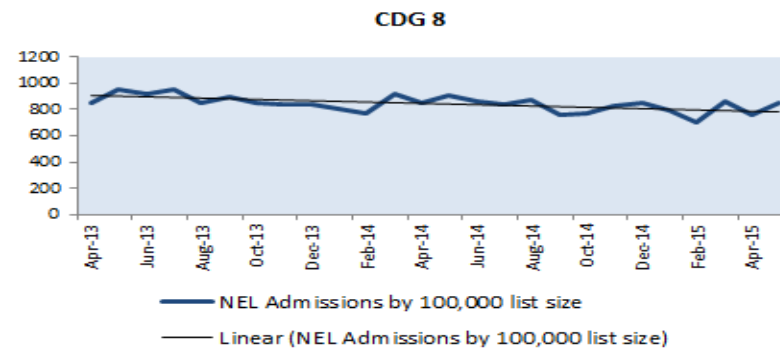
Non Elective Admissions (General & Acute) by CDG (NUH Only) (rate per 100,000 CDG raw list size)



Source: Fast Track

Chart 3

Non Elective Admissions (General & Acute) by CDG (NUH Only) (rate per 100,000 CDG raw list size)



Source: Fast Track

Chart 4

## Non Elective Admissions

Non Elective Admissions (General & Acute) by CDG percentage change - 6 month rolling average

Month	CDG 1	CDG 2	CDG 3	CDG 4	CDG 5	CDG 6	CDG 7	CDG 8
Oct-13	2.5%	-0.4%	0.5%	-1.0%	2.2%	3.2%	6.9%	0.1%
Nov-13	-1.0%	1.3%	-1.6%	-0.4%	1.4%	-1.0%	0.2%	-1.9%
Dec-13	-0.9%	-2.1%	-2.1%	-0.2%	0.4%	0.4%	1.7%	-1.3%
Jan-14	1.5%	-1.3%	0.6%	-0.3%	-2.9%	0.5%	3.3%	-2.8%
Feb-14	-1.2%	-1.1%	-1.7%	0.6%	-3.7%	-1.2%	3.1%	-1.6%
Mar-14	4.6%	3.8%	2.1%	0.7%	0.8%	1.2%	4.0%	0.8%
Apr-14	-1.3%	0.5%	0.4%	-0.1%	-2.1%	-3.4%	-3.1%	0.5%
May-14	2.0%	-0.7%	2.8%	0.1%	-1.9%	2.5%	2.7%	1.8%
Jun-14	1.4%	1.4%	0.5%	1.2%	3.1%	-0.1%	-0.6%	0.8%
Jul-14	1.0%	3.4%	0.7%	0.7%	3.5%	1.6%	1.5%	1.2%
Aug-14	1.5%	1.2%	3.3%	-2.5%	4.5%	2.5%	-1.1%	2.5%
Sep-14	-2.2%	-6.0%	-2.3%	0.4%	-0.2%	-0.9%	-3.5%	-2.9%
Oct-14	2.4%	2.5%	1.9%	0.8%	1.3%	3.5%	2.9%	-1.5%
Nov-14	-0.5%	-0.4%	-2.1%	-0.5%	2.6%	-0.4%	-2.5%	-1.3%
Dec-14	3.1%	0.1%	4.1%	-0.8%	-0.3%	1.7%	0.9%	0.0%
Jan-15	0.7%	-2.4%	0.6%	-1.6%	-0.6%	-2.3%	-1.2%	-0.7%
Feb-15	3.8%	-1.4%	-3.4%	1.1%	0.5%	-2.0%	1.3%	-3.2%
Mar-15	0.2%	3.0%	3.5%	-2.8%	0.6%	4.4%	-0.3%	2.5%
Apr-15	-0.7%	0.8%	1.2%	-2.4%	-1.3%	0.3%	-1.6%	0.4%
May-15	0.4%	3.5%	5.4%	-1.7%	-1.0%	0.0%	0.0%	1.0%

< 3%
between 3% and 5%
>5%

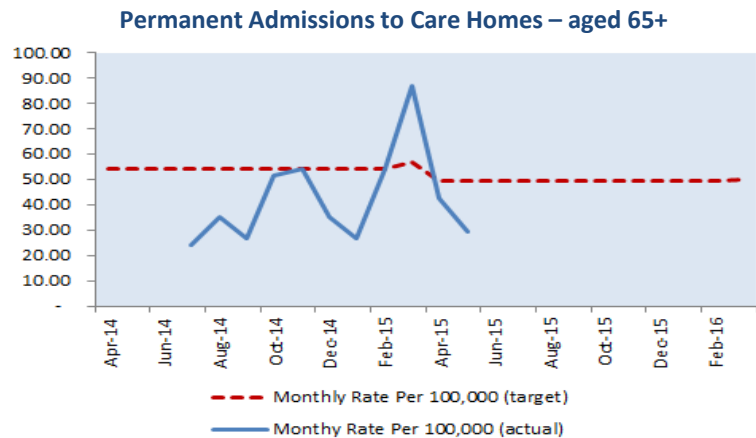
Table 1

Source: Fast Track

### Commentary

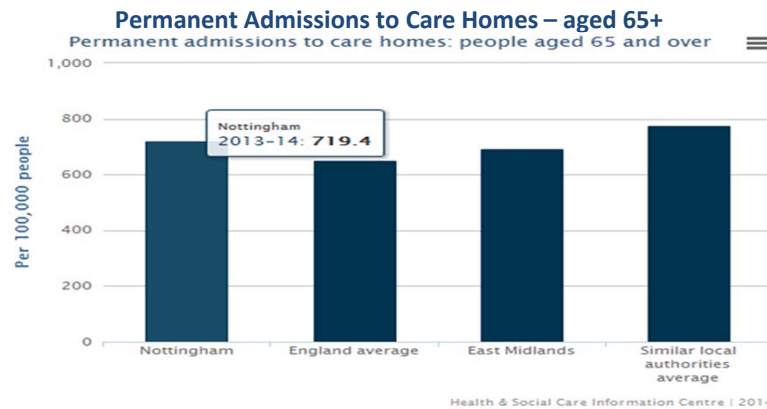
**Table 1** – Shows the rolling average percentage change in Non Elective admissions by CDG per 100,000 population of list size, based on rolling 6 month periods.

## Residential Admissions



Source: Local Authority Reporting

Chart 1



Ranked 102 of 151

Source: HSCIC Adult & Social Care Outcomes

Chart 2

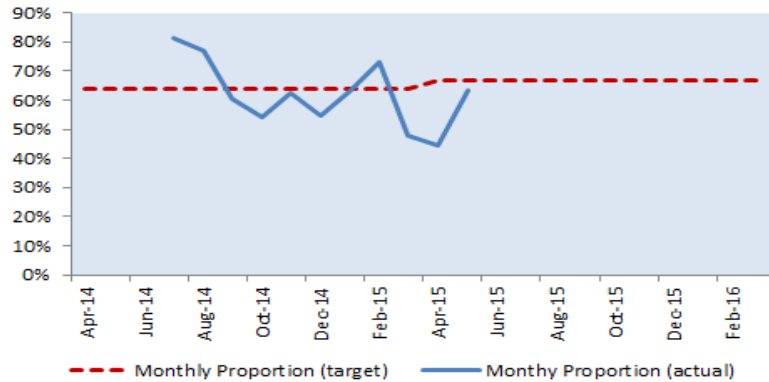
### Commentary

**Chart 1** – April and May 2015 figures are back below the target line after the high numbers seen in March.

**Chart 2** – shows final data for Nottingham City in 2013/14 with a ranking of 102 of 151. The ranking in 2012/13 was 150 of 150. From HSCIC

## Reablement

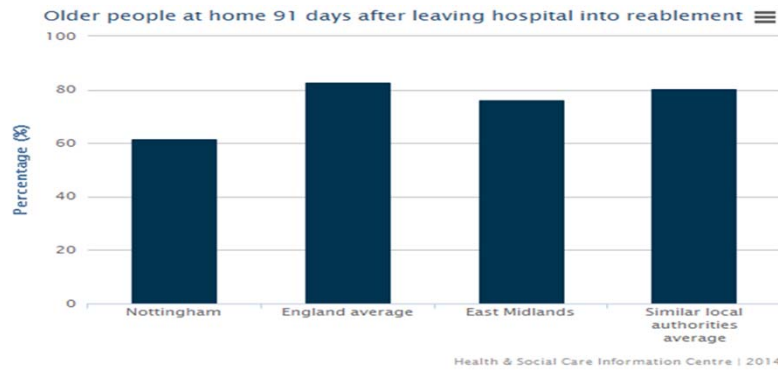
Older people at home 91 days after leaving hospital into reablement



Source: Local Authority Reporting & City Care Reports

Chart 1

Older people at home 91 days after leaving hospital into reablement



Ranked 148 of 151

Source: HSCIC Adult & Social Care Outcomes

Chart 2

### Commentary

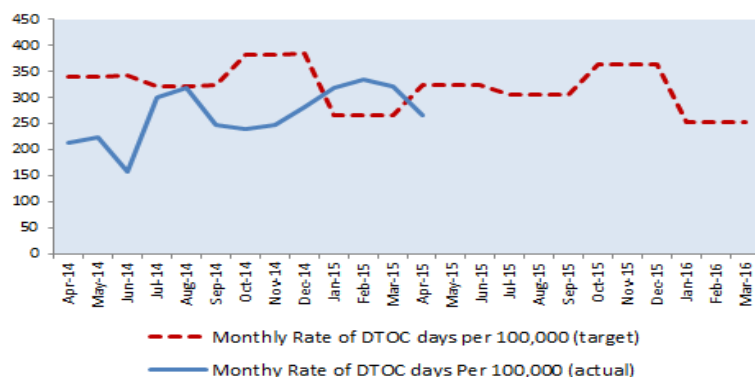
**Chart 1** - Shows monthly trend of reablement metric, proportion of actual number of older people at home after 91 days against discharge for the identified population. This is based on combined figures from the Local Authority and City Care. The City Care figures are currently based on both step-up and step-down services. They are working to split this to be able to just show the step-down service as the metric should just related to those patients discharged from Hospital. City Care attempt to contact all users of the reablement service 91 days after discharge, those users who are not contactable are excluded from the denominator. May 2015 performance is just below target but closer than it has been in the last 2 months.

**Chart 2** - shows final data for Nottingham City in 2013/14, with a ranking of 148 of 151. The ranking in 2012/13 was 150 of 150.

From HSCIC

## Delayed Transfers of Care (DTOC)

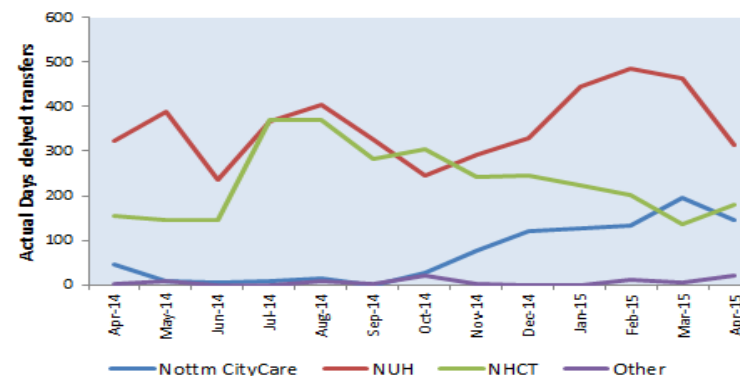
Delayed transfers of Care (Days) for Nottingham UA by 100,000 pop



Source: DTOC National Reports

Chart 1

Delayed transfers of Care (Days) by local provider



Source: DTOC National Reports

Chart 2

### Commentary

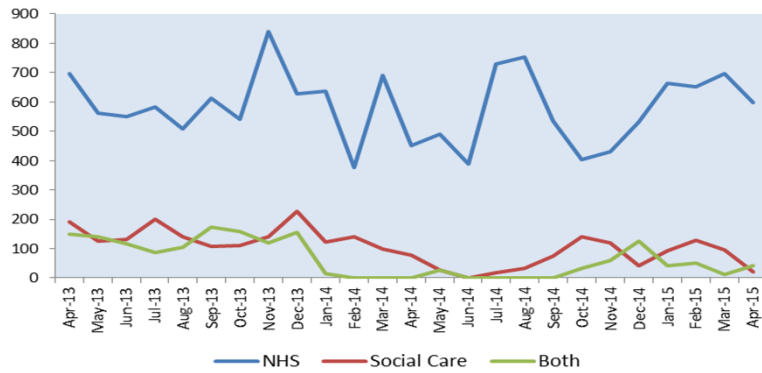
**Chart 1** - Delayed Transfers of Care for Nottingham Unitary Authority based on the National DTOC reports, by 100,000 population aged 18 years and over. February and March 2015 performance is above the target but April came back down below target.

**Chart 2** - Trend in Delayed Transfers of Care by local providers for Nottingham Unitary Authority. Levels at NUH appear to have fallen in April 2015 which most likely contributed to the overall target being met for April. DTOC levels at NHCT and CityCare remain similar to the previous months.

Nottingham City Care have changed there reporting methodology from October 2014 which is likely to be behind the increase seen in chart 2

# Delayed Transfers of Care

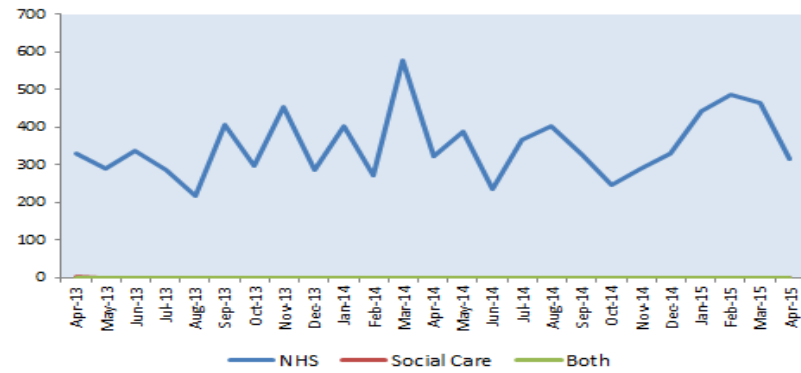
## Trend of Delayed Transfers of Care All Providers



Source: Monthly DTOC reports NHSE

Chart 1

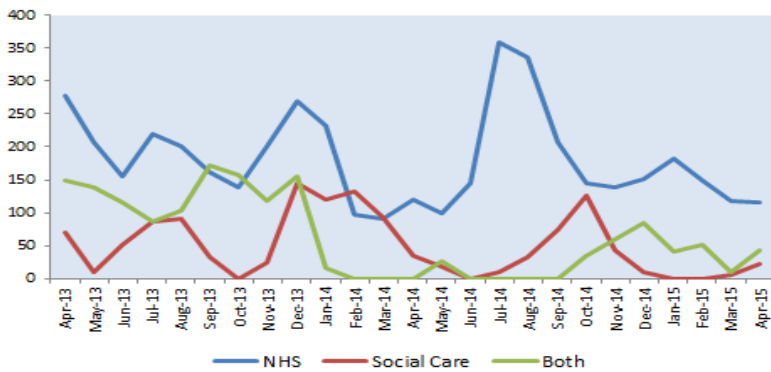
## Trend of Delayed Transfers of Care NUH



Source: Monthly DTOC reports NHSE

Chart 2

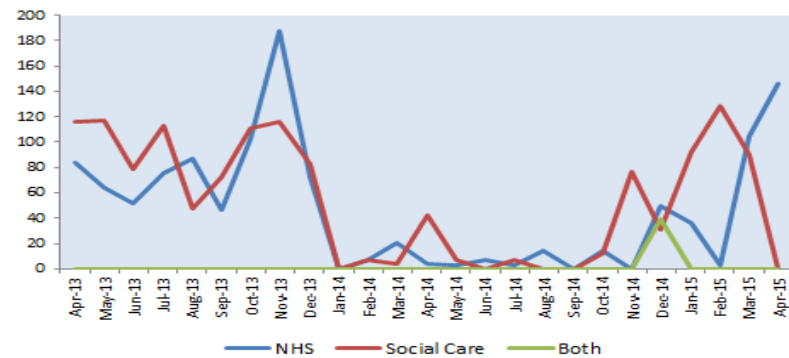
## Trend of Delayed Transfers of Care Notts Healthcare Trust



Source: Monthly DTOC reports NHSE

Chart 3

## Trend of Delayed Transfers of Care Nottingham City Care

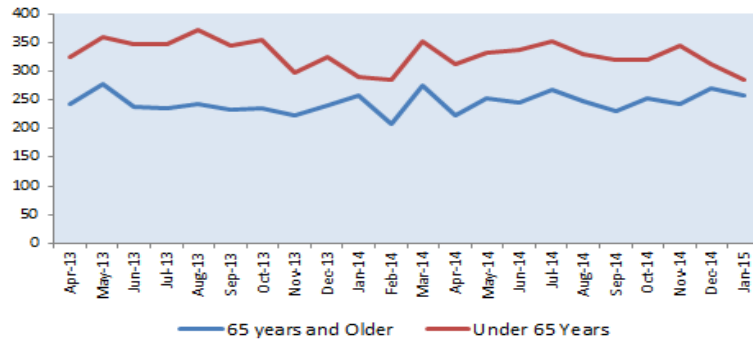


Source: Monthly DTOC reports NHSE

Chart 4

## Emergency Readmissions at NUH

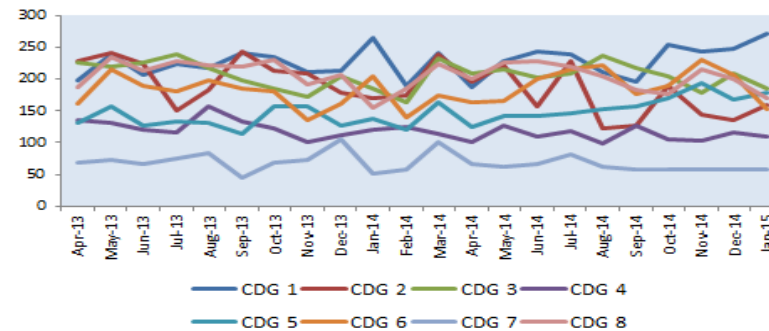
Emergency Readmissions at NUH



Source: Medway PAS

Chart 1

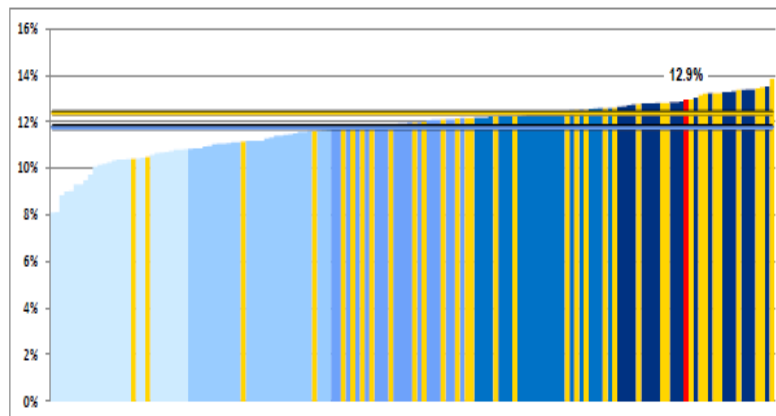
Emergency Readmissions at NUH by 100,00 pop of CDG



Source: Medway PAS

Chart 2

Emergency Readmissions Benchmark – Nottingham LA



Source: NHS England LA Outcomes

Chart 3

### Commentary

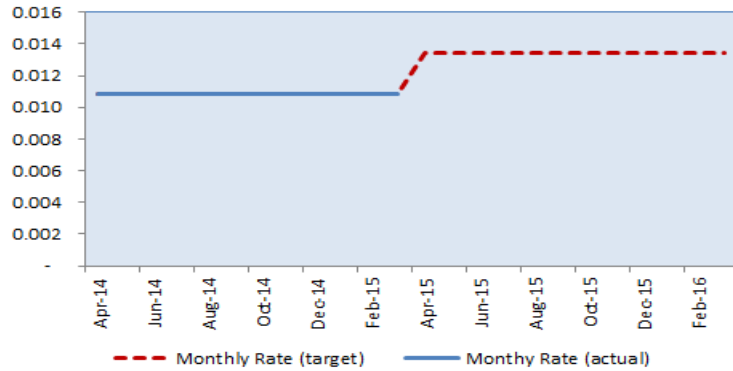
Data in charts 1 and 2 is from an initial dataset supplied by NUH which is subject to further quality checks. It only relates to patients where the original admission was at NUH, ie it would exclude a patient seen at the Treatment Centre in the first instance who was subsequently admitted to NUH for further treatment in an emergency.

In chart 3 Nottingham LA is the red bar, the peer group is shown within the yellow bars for 2010/11.



## Uptake of Assistive Technology

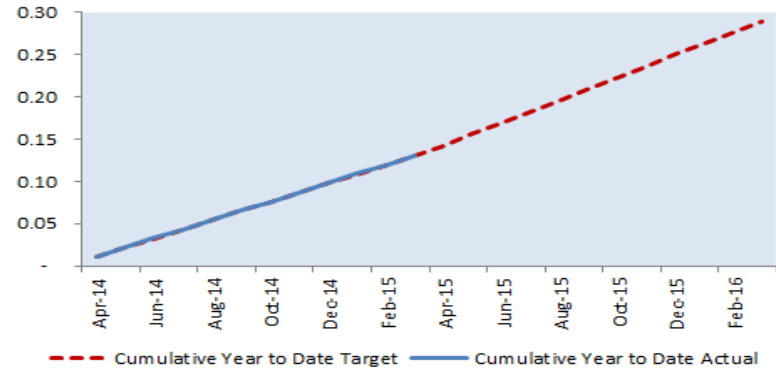
Uptake of Assistive Technology



Source: AT project statistics

Chart 1

Cumulative uptake of Assistive Technology



Source: AT project statistics

Chart 2

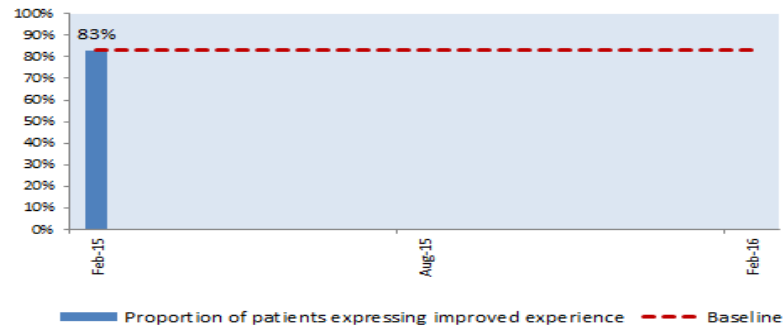
### Commentary

**Chart 1** Shows the rate of uptake of Assistive Technology as a proportion of the population aged 65 years and older against target. The uptake in the financial year 2014-15 was just above target, the target steps up a level in 2015-16.

**Chart 2** Shows the cumulative view of the uptake of Assistive Technology.

## Patient / Service User Experience Metric

### Proportion of citizens with Long Term Conditions reporting Improved Experience



Source: 6 monthly Patient Survey

Chart 1

### Commentary

The patient survey shows 83% of those citizens with long term conditions taking part in the survey reported an improved experience. This will form the metric baseline and will be updated on a 6 monthly basis.

The survey that has resulted in this baseline has covered a period of time when initiatives were already in place and as such it is expected that this baseline already picks up some level of improvement in patient experience.

The next survey results are not expected until August 2015.